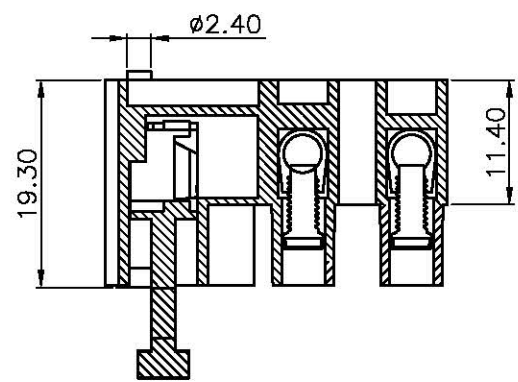
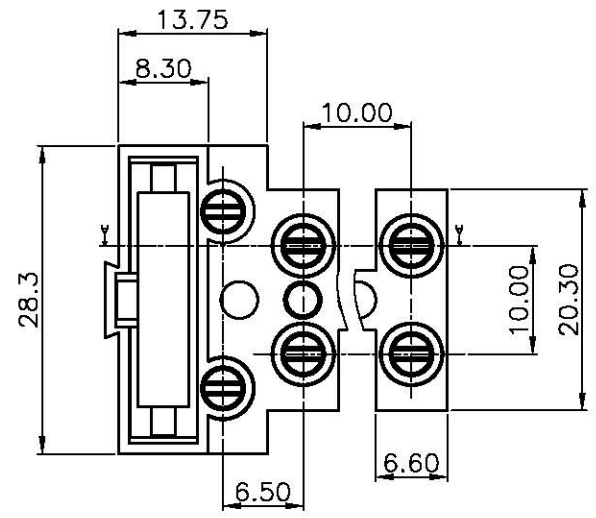
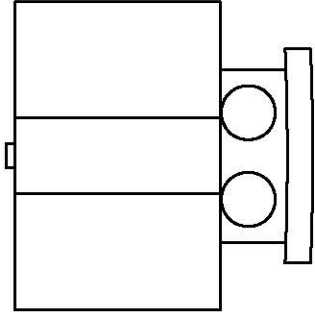


| REV. | DESCRIPTION | DRAWN         | CHECKED | APPROVED |
|------|-------------|---------------|---------|----------|
| A    | NEW RELEASE | LJH 07/07/07' |         |          |
|      |             |               |         |          |
|      |             |               |         |          |



SECTION A-A

- Material  
Screws : M3 steel Zinc plated  
Contact : Brass, Tin plated  
Housing : PA66, UL94V-0
- Electrical  
Rated voltage : 300V  
Rated current : 10A  
Contact resistance : 20mΩ  
Insulation resistance: 5000MΩ/1000V  
Withstanding Voltage : AC2000V/1Min  
Wire range: 22-14AWG 2.5mm<sup>2</sup>
- Mechanical  
Temp.Range : -40°C ~ +105°C  
MAX Soldering: +250°C for 5 Sec.  
Torque: 0.5Nm (4.5Lb.in)  
Strip length: 6-7mm

PRODUCT NUMBER CODE:

KF100- X X X X

- HOUSING COLOR  
B:BLACK A:GRAY
- CONTACT PLATING  
0:GOLD FLASH 6:Tin
- CONNECTOR TYPE  
P:PLUG S:SOCKET
- No.OF CONTACTS  
02-X

| GENERAL TOLERANCE |       | ANGLE TOLERANCE |     |
|-------------------|-------|-----------------|-----|
| X.                | ±0.60 | X.              | ±5° |
| .X                | ±0.38 | .X              | ±3° |
| .XX               | ±0.25 | .XX             | ±2° |

|            |    |        |                              |
|------------|----|--------|------------------------------|
| PROJECTION |    | TITLE  | FEED THROUGH TERMINAL BLOCKS |
| UNITS      | mm |        | PITCH10.00MM                 |
| SHEET SIZE | A4 | SERIES | KF100SERIES                  |

|              |            |       |        |
|--------------|------------|-------|--------|
| DRAWING TYPE | CUSTOMER   |       |        |
| SCALE        | 1:1        | SHEET | 1 OF 1 |
| DRAWING NO.  | KF100-XXXX |       |        |

smart solutions inside

**FARADAY**

ELECTRONICS